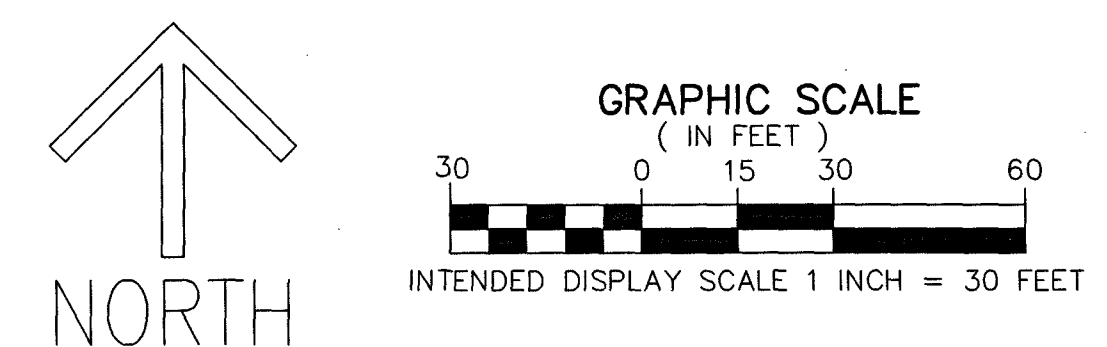


THIS INSTRUMENT PREPARED BY
DAVID P. LINDLEY
OF
CAULFIELD & WHEELER, INC.
SURVEYORS - ENGINEERS - PLANNERS
7900 GLADES ROAD, SUITE 100
BOCA RATON, FLORIDA 33434 - (561)392-1991
CERTIFICATE OF AUTHORIZATION NO. LB3591

ROSARIAN ACADEMY REPLAT

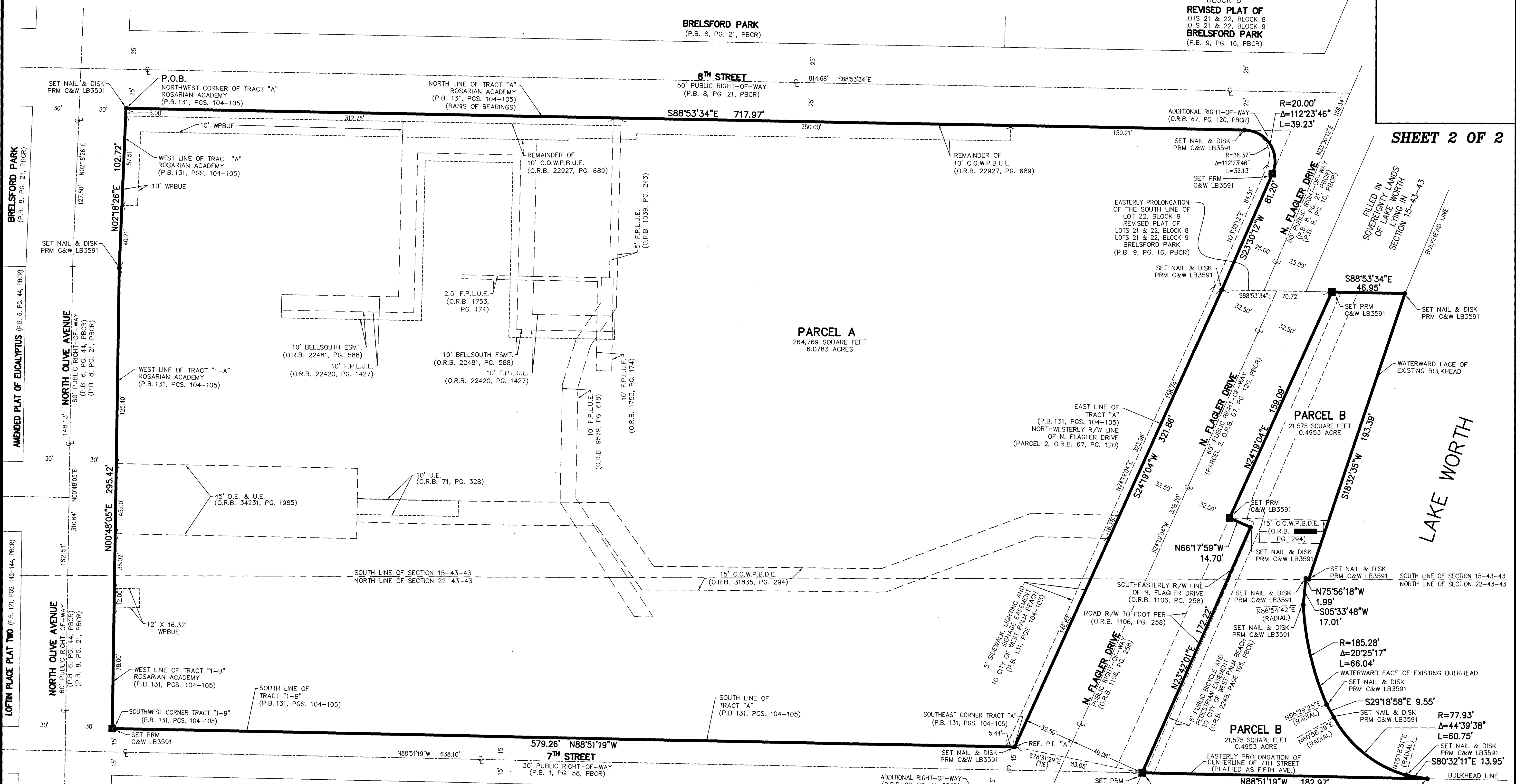
A REPLAT OF ALL OF ROSARIAN ACADEMY, RECORDED IN PLAT BOOK 131, PAGES 104 AND 105,
TOGETHER WITH THE NORTH ONE-HALF OF LOTS 1 THROUGH 5 AND ALL OF LOT 6, BLOCK 5, AMENDED PLAT OF EUCALYPTUS PARK, RECORDED IN PLAT
BOOK 6, PAGE 44, TOGETHER WITH THAT PORTION OF EUCALYPTUS STREET AS VACATED PER OFFICIAL RECORDS BOOK 34231, PAGE 1985.,
ALL RECORDED IN THE PUBLIC RECORDS OF PALM BEACH COUNTY, FLORIDA,
TOGETHER WITH FILLED IN SOVEREIGNTY LANDS OF LAKE WORTH
LYING IN SECTIONS 15 AND 22, TOWNSHIP 43 SOUTH, RANGE 43 EAST, CITY OF WEST PALM BEACH, PALM BEACH COUNTY, FLORIDA.



199

BLOCK 8
REVISED PLAT OF
LOTS 21 & 22, BLOCK 8
LOTS 21 & 22, BLOCK 9
BRELSFORD PARK
(P.B. 9, PG. 16, PBCR)

SHEET 2 OF 2



- LEGEND/ABBREVIATIONS:**
- LB - LICENSED BUSINESS
 - O.R.B. - OFFICIAL RECORDS BOOK
 - P.B. - PLAT BOOK
 - PG(S). - PAGE(S)
 - P.O.B. - POINT OF BEGINNING
 - P.L.S. - PROFESSIONAL LAND SURVEYOR
 - P.S.M. - PROFESSIONAL SURVEYOR & MAPPER
 - R/W - RIGHT-OF-WAY
 - CL - CENTERLINE
 - REF. PT. - REFERENCE POINT
 - WPBUE - WEST PALM BEACH UTILITY EASEMENT
 - FDOT - FLORIDA DEPARTMENT OF TRANSPORTATION
 - U.E. - UTILITY EASEMENT

- MAP OF RAILWAY ADDITION**
(P.B. 1, PG. 58, PBCR)
- ESMT. - EASEMENT
 - PBCR - PALM BEACH COUNTY RECORD
 - PRM - PERMANENT REFERENCE MONUMENT
 - R - RADIUS
 - Δ - DELTA (CENTRAL ANGLE)
 - L - ARC LENGTH
 - F.P.L.U.E. - FLORIDA POWER AND LIGHT COMPANY UTILITY EASEMENT
 - C.O.W.P.B.U.E. - CITY OF WEST PALM BEACH UTILITY EASEMENT
 - C.O.W.P.B.D.E. - CITY OF WEST PALM BEACH DRAINAGE EASEMENT
 - PRM - INDICATES SET PERMANENT REFERENCE MONUMENT, NAIL WITH DISC, STAMPED "PRM C&W LB3591", UNLESS NOTED OTHERWISE.
 - PRM - DENOTES PERMANENT REFERENCE MONUMENT 4"X 4"X 24" CONCRETE MONUMENT WITH ALUMINUM DISK STAMPED "C&W PRM LB3591" UNLESS OTHERWISE NOTED

NOT PLATTED
PORTION OF
SECTION 22-43-43

ONE WATERMARK PLACE OF THE
PALM BEACHES CONDOMINIUM
FILLED IN SOVEREIGNTY LANDS
OF LAKE WORTH
LYING IN
SECTION 22-43-43